

 **SODIMAS**<sup>®</sup>

ascenseurs



**SIGNALISATION**  
**SIGNAL SYSTEM**



## Boîte à boutons sur mesure

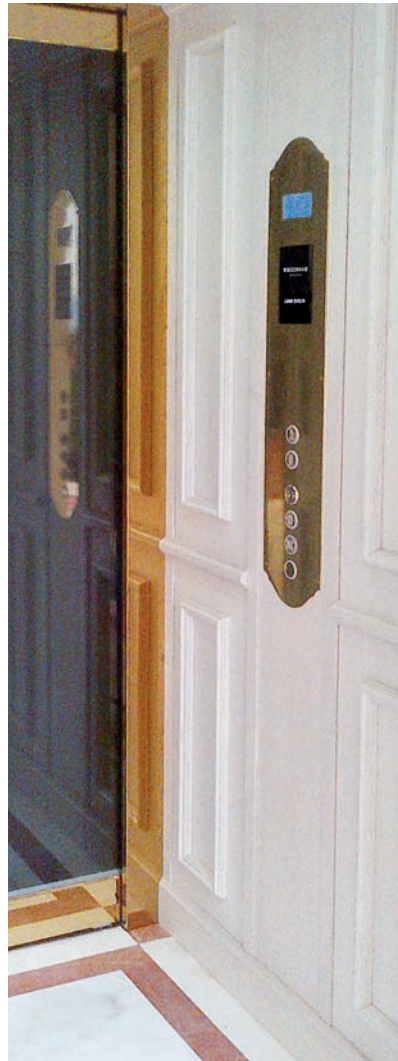
*Tailor made C.O.P.*

Colonne inox poli miroir noire

*Mirror polished black stainless steel column*


Plastron type rétro

en laiton poli verni

*Varnished and polished brass front plate "Retro" style*


Plastron cabine ou palier

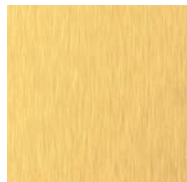
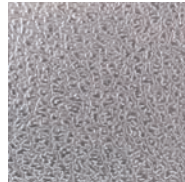
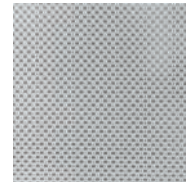
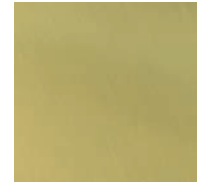
tous types de formes

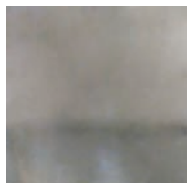
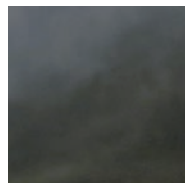
*Car or landing face plate various shapes available*


## Finitions

*Finishings*

(Autres finitions sur demande)

*(Others finishings on request)*

 Inox brossé ton or  
*Brushed stainless steel gold color*

 Inox gravé  
*Engraved stainless steel*

 Inox lino  
*Lino stainless steel*

 Laiton poli vernis  
*Varnished polished brass*

 Inox brossé  
*Brushed stainless steel*

 Inox poli miroir chromé  
*Mirror polished stainless steel chrome color*

 Inox poli miroir noir  
*Mirror polished stainless steel black color*

 Inox poli miroir or  
*Mirror polished stainless steel gold color*


Série applique  
Bracket range

**Colonne cabine en applique / Bracket car C.O.P.**

Montage des composants en standard ou en anti-vandale  
Finition inox brossé

Option : chapeau de finition,  
profils latéraux lumineux ou profils intégrés à l'habillage  
Standard or vandal resistant mounting assembly  
Brushed stainless steel finishing

Option : Additional plate, profiles with light  
(lateral or integrated to the car finishing)



**Plastron palier en applique  
Bracket landing face plate**

Finition inox brossé  
Brushed stainless steel finishing



**Plastron palier encastré  
Built-in landing face plate**

Montage des composants en standard ou en anti-vandale  
Finition inox brossé

Standard or vandal resistant mounting assembly  
Brushed stainless steel finishing



Série encastrée  
Built-in range



**Plastron cabine encastré  
Car built-in face plate**

Montage des composants en standard ou en anti-vandale  
Finition inox brossé

Standard or vandal resistant mounting assembly  
Brushed stainless steel finish

EVOLYA



Boîte à boutons cabine horizontale gamme XL  
Horizontal car C.O.P. XL range

**Plastron cabine horizontal  
Horizontal car face plate**

Conforme norme 81/70 annexe G - Finition inox brossé  
Montage des composants standard ou en anti-vandale

Complies with 81/70 standards appendice G - Brushed stainless steel finishing  
Standard or vandal-resistant components mounting



**Plastron palier applique  
Bracket landing face plate**

Conforme norme 81/70 annexe G  
Finition inox brossé

Complies with 81/70 standards appendice G  
Brushed stainless steel finishing



**Version standard**  
Standard version

Bouton Angel - Evolya  
Evolya - Angel button



**EVOLYA**  
Colerette braille  
Braille ring

**Version anti-vandale 81-71**  
Vandal resistant 81-71 standards

Bouton Démon - Evolya  
Evolya - Demon button



Repère chrome ou noir - Bouton Angel  
Chrome or black code - Angel button



**SYNIA**  
Repère indépendant  
en relief  
Identification plate  
independant relief

Repère chrome ou noir - Bouton Démon  
Chrome or black code - Demon button



**CYNTRA**

Bouton inox brossé  
Brushed stainless steel button



Bouton inox brossé ton or  
Brushed stainless steel gold button



Contact à clé  
Key contact

**Version standard**



**Version anti-vandale 81-71**  
Vandal resistant 81-71 standards



Canon européen  
European key



Normes EN81-70  
et EN81/71  
Standards EN81-70  
& EN81/71

**CYNTRA XL**

Bouton braille grande taille  
Braille button large size



Ø 56 mm

Profils latéraux pour colonne et 1/2 colonne  
Lateral profiles for COP and half height COP



# www.SODIMAS®.com



FABRICATION FRANCAISE

**Siège social / Head office**

11 rue Ampère  
26600 Pont de l'Isère  
FRANCE

☎ +33(0)4 75 84 86 00

☎ +33(0)4 75 84 67 30

e-mail : [accueil@sodimas.fr](mailto:accueil@sodimas.fr)

**27 000 006**

FR

UK

Création SODIMAS 09/2012 - Photos et illustrations non contractuelles. Sous réserve de modifications. Reproduction, même partielle, interdite.  
SODIMAS design - Photographs and illustrations not contractual. Modifications without prior notice. Speechless reproduction even partial